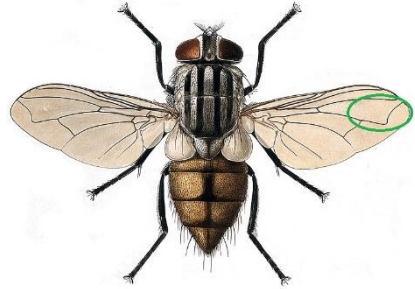


'The' House-fly

Musca domestica

Identification:

'The' House-fly has no orange on the legs, no blue or green colour, and no dark mark on the wing. If you see a fly indoors, 5-7mm with a sharply curved vein in the wing (circled green), alternating pale and dark stripes on the thorax, and some orange on the sides of the abdomen you *might* have one. A good pointer is its habit of invading your personal space at mealtimes.

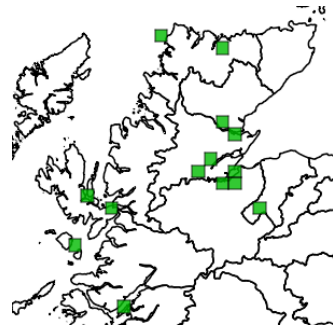


House-fly *Musca domestica*.

Photo © A.J.E. Terzi.

Distribution:

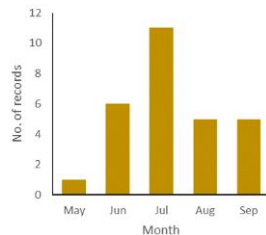
We have records across our area, but they are remarkably scarce. We have only 28 records in the last 10 years, with often none and no more than 7 in any one year.



The distribution of records of the House-fly in the HBRG database.

When to look for it:

All our records are between May and September, though as it is usually found indoors a longer season would be expected.



Similar species:

There are many superficially similar flies, and specialist identification is needed, so please submit a photograph or specimen for confirmation.

Notes:

Increased hygiene seems to have caused a huge decrease in numbers in the past several decades, but not the concern that something prettier would induce!