

# Painted Woodlouse

## *Porcellio spinicornis*



### **Identification:**

The Painted Woodlouse is distinctive in having a contrasting dark head, and a dark central stripe on the body flanked by bright yellow marks. Advice on identification can be had on the [BMIG website](#).

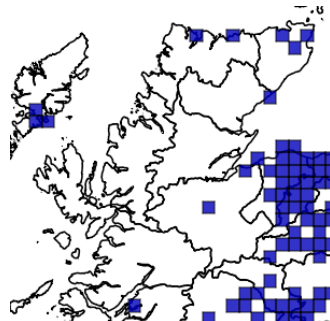


Painted Woodlouse  
*Porcellio spinicornis*.

Photo © Stephen Moran.

### **Distribution:**

The current known distribution is very odd – almost absent from Highland, but in the Western Isles, Orkney and Shetland, and widespread to the east and south of us. It is reputed to favour basic habitats, which might explain some of the distribution, but it is sure to be overlooked in Highland.



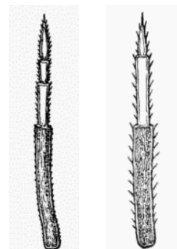
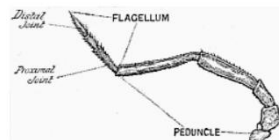
The distribution of records of the Painted Woodlouse on the [NBN Atlas](#).

### **When to look for it:**

It may be found all year, and a recommended technique is to examine lime-mortared walls at night.

### **Similar species:**

Confusion is most likely with the abundant Shiny Woodlouse *Oniscus asellus*. This has pale marks, sometimes yellowish, but lacks the dark head, and has 3 segments (L) in the flagellum – only 2 in the Painted Woodlouse (R).



Diagrams from [Webb \(1906\)](#)